

OVERVIEW

MOTOR SPECIFICATIONS

FIELDBUS OPTIONS

BRAKE OPTIONS

CONNECTIVITY

PERIPHERALS

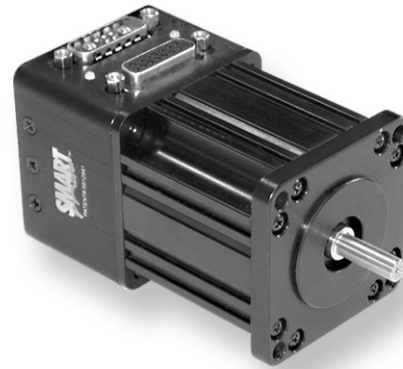
POWER SUPPLIES & SHUNTS

GEAR HEADS

SOFTWARE

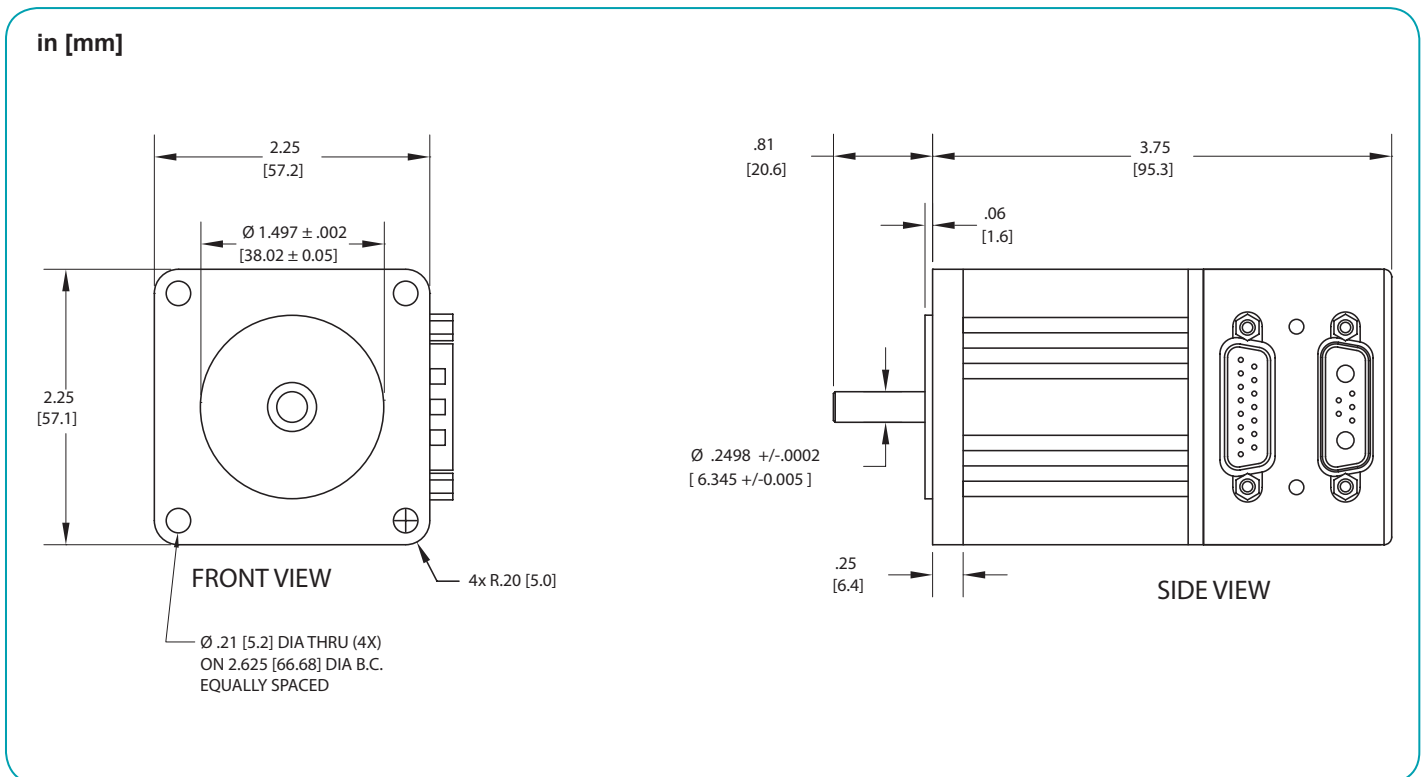
APPENDIX

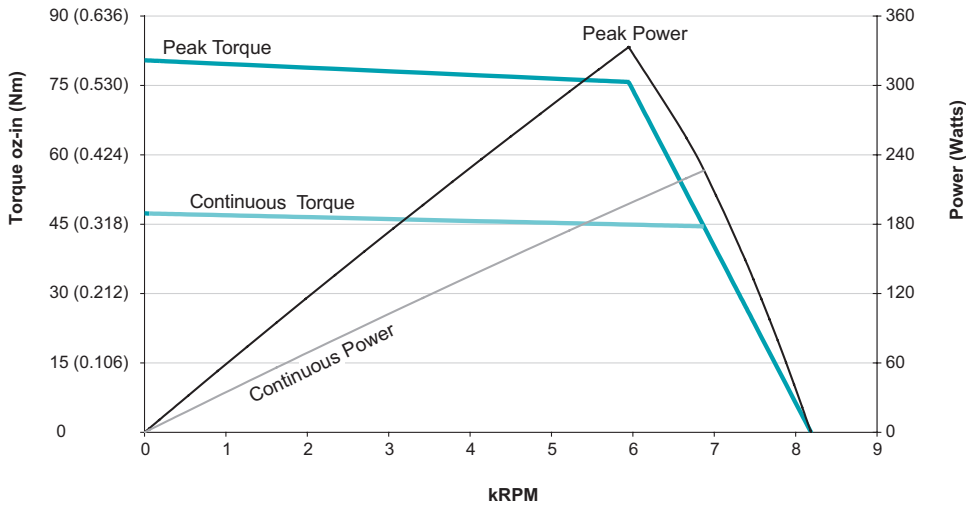
SM2320D-PLS2		
Continuous Torque	2.96	in-lb
	47	oz-in
	0.33	N-m
Peak Torque	5.03	in-lb
	80	oz-in
	0.57	N-m
Nominal Continuous Power	226	Watt
No Load Speed	8,100	RPM
Continuous Current @ Nominal Power	6.6	Amps
Voltage Constant	6.6	V/kRPM
Winding Resistance	1.1	ohms
Encoder Resolution	4,000	Counts/Rev
Rotor Inertia	0.00184	oz-in-sec <sup>2</sup>
	1.300	10 <sup>-6</sup> Kg-m <sup>2</sup>
Weight	1.7	lb
	0.79	kg
Shaft Diameter	0.250	in
	6.35	mm
Shaft, Radial Load	7	lb
	3.18	kg
Shaft, Axial Thrust Load	3	lb
	1.36	kg
EtherNet Available		
DeviceNet Available		Yes*
ProfiBus Available		Yes*
CanOpen Available		



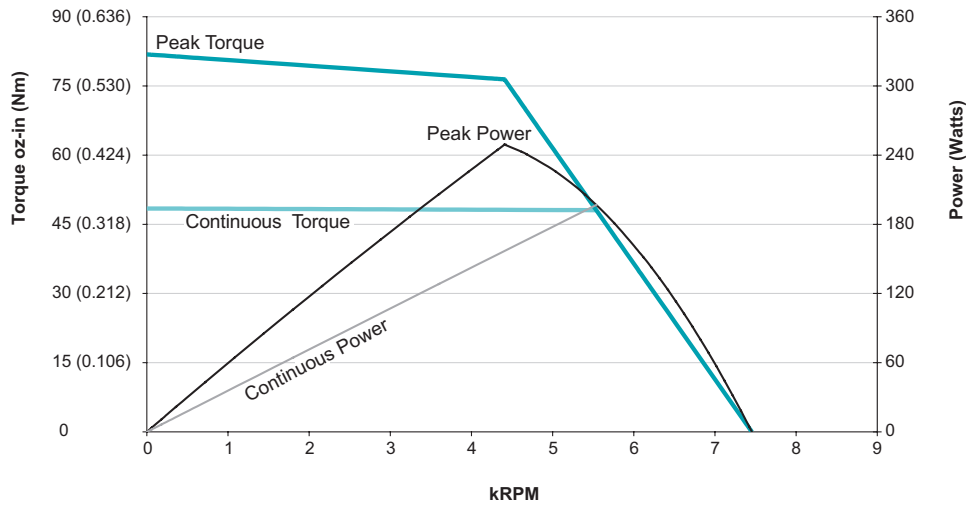
\*Note: These options are only available for PLS firmware, not PLS2 firmware

## Animatics SmartMotor SM2320D-PLS2 (No Options) CAD Drawing

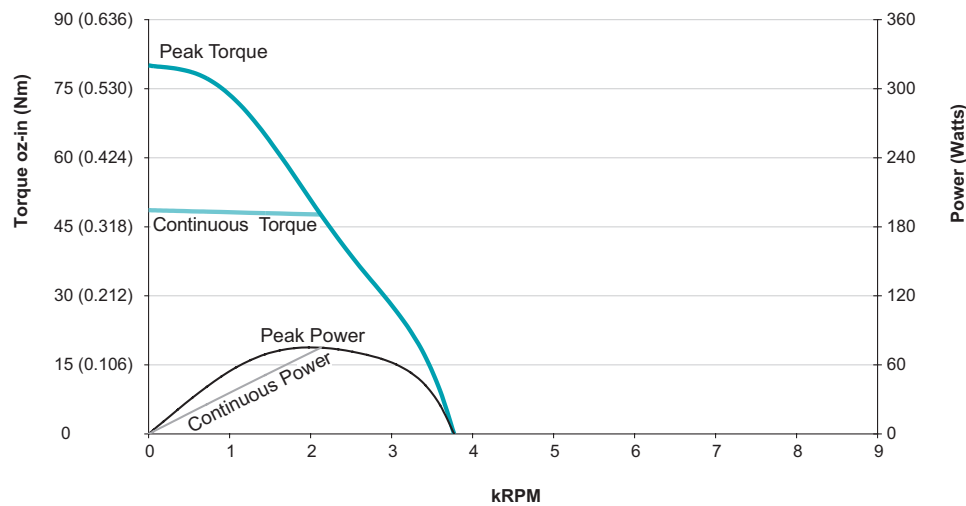




**SM2320D-PLS2**  
**at 48 VDC**  
**at rise to 85°C**



**SM2320D-PLS2**  
**at 42 VDC**  
**at rise to 85°C**



**SM2320D-PLS2**  
**at 24 VDC**  
**at rise to 85°C**