

OVERVIEW

MOTOR SPECIFICATIONS

FIELDBUS OPTIONS

BRAKE OPTIONS

CONNECTIVITY

PERIPHERALS

POWER SUPPLIES & SHUNTS

GEAR HEADS

SOFTWARE

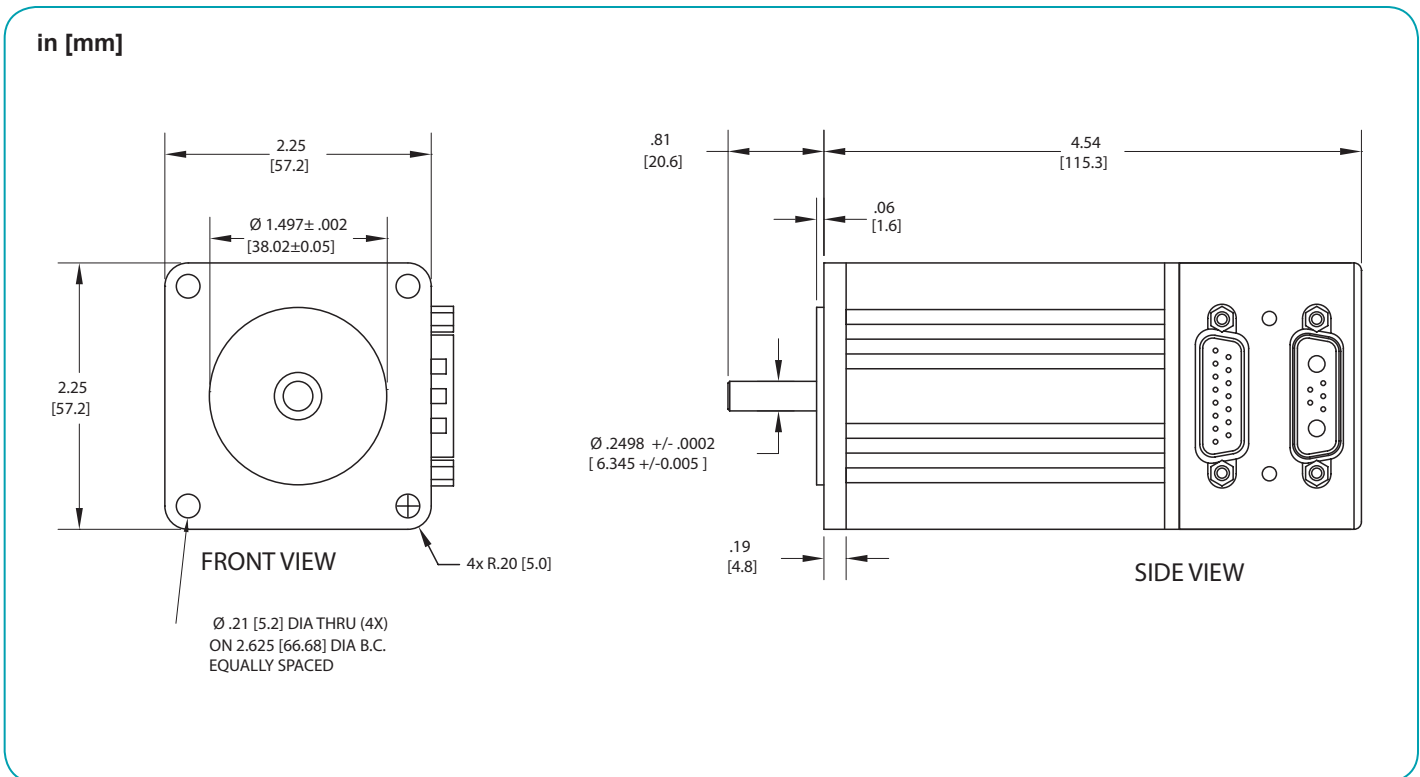
APPENDIX

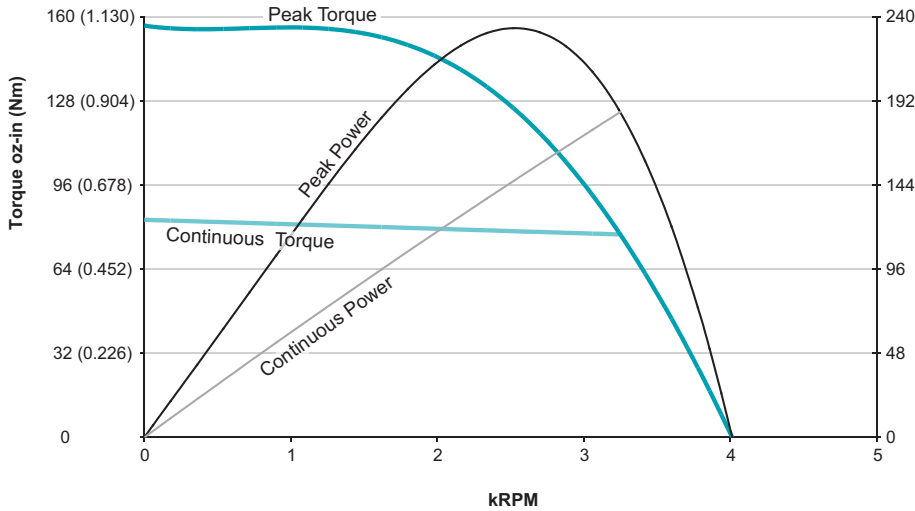
SM2337DT-PLS2		
Continuous Torque	5.18	in-lb
	83	oz-in
	0.59	N-m
Peak Torque	9.80	in-lb
	157	oz-in
	1.11	N-m
Nominal Continuous Power	186	Watt
No Load Speed	4,000	RPM
Continuous Current @ Nominal Power	5.9	Amps
Voltage Constant	10.95	V/kRPM
Winding Resistance	0.9	ohms
Encoder Resolution	4,000	Counts/Rev
Rotor Inertia	0.0019	oz-in-sec <sup>2</sup>
	1.342	10 <sup>-6</sup> Kg-m <sup>2</sup>
Weight	2.2	lb
	0.98	kg
Shaft Diameter	0.250	in
	6.35	mm
Shaft, Radial Load	7	lb
	3.18	kg
Shaft, Axial Thrust Load	3	lb
	1.36	kg
EtherNet Available		
DeviceNet Available		Yes*
ProfiBus Available		Yes*
CanOpen Available		



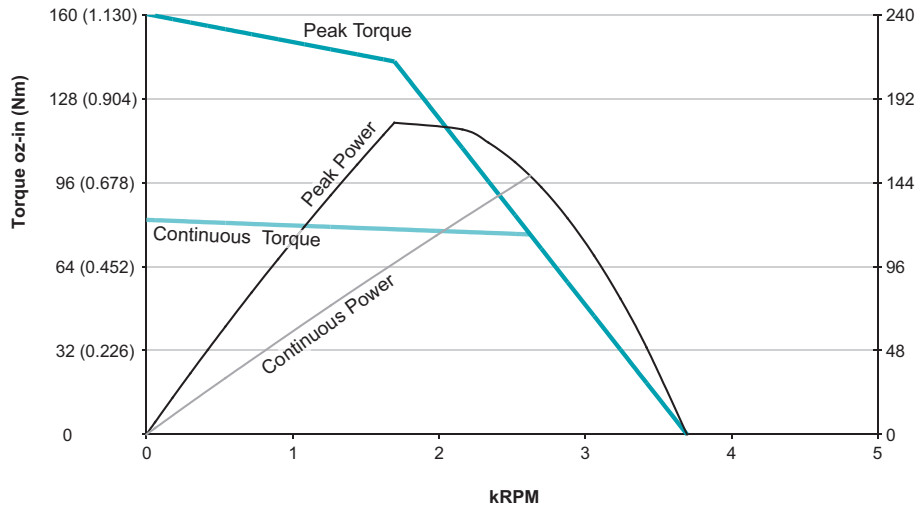
\*Note: These options are only available for PLS firmware, not PLS2 firmware

## Animatics SmartMotor SM2337DT-PLS2 (No Options) CAD Drawing

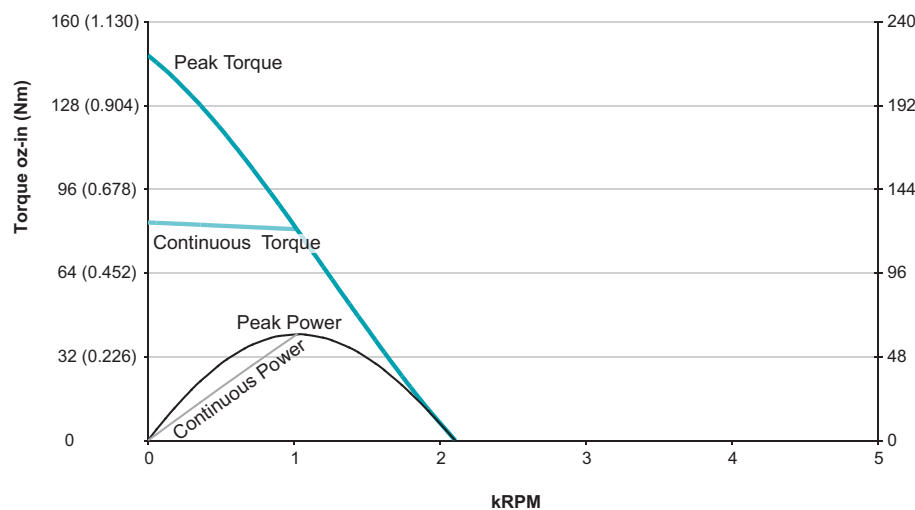




**SM2337DT-PLS2**  
at 48 VDC  
at rise to 85°C



**SM2337DT-PLS2**  
at 42 VDC  
at rise to 85°C



**SM2337DT-PLS2**  
at 24 VDC  
at rise to 85°C