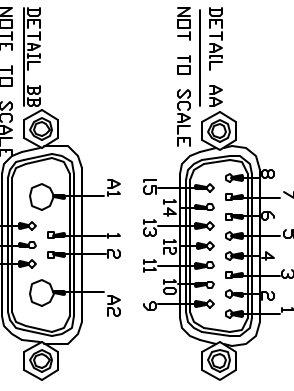
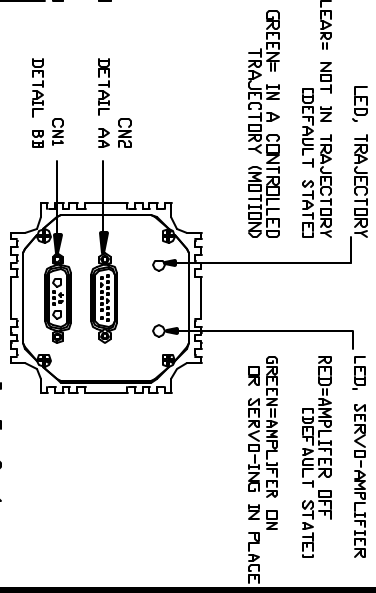
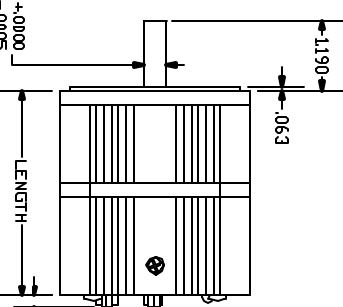
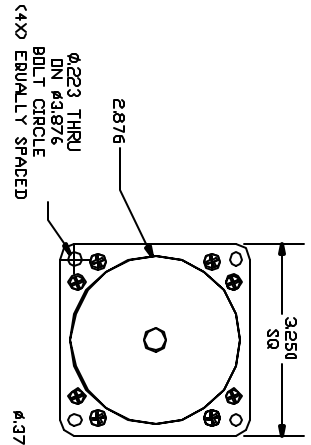


NOTES 1) INTERNAL 1000 LINE ENCODER, 4000 ENCODER COUNTS PER REVOLUTION.
INDEX LINE ON ENCODER WHEEL.

2) TIED INTERNALLY:
TX : CN2 PIN 10 TO CN1 PIN 3
RX : CN2 PIN 11 TO CN1 PIN 4
+5V : CN2 PIN 12 TO CN1 PIN 2
GND : CN2 PIN 13, CN2 PIN 14 AND CN1 PIN 5 TIED TO CN1 PIN A2

3) DRIVE AND CONTROLLER POWER ON SEPARATE PINS.
MUST PROVIDE POWER TO CONTROL AND DRIVE POWER TO OPERATE TO DISABLE DRIVE. DISCONNECT DRIVE (AMPLIFIER) POWER ON CN1.

PIN#	NAME	FUNCTIONS
1	I/O G	G-Synchronization Pin
2	+5V OUT	+5V OUT
3	RS232 TX	RS232-Transmit
4	RS232 RX	RS232-Receive
5	GND	Signal Ground
A1	DRV PWR	Drive Power, +20 to 48V dc
A2	PWR GND	Power Ground



MODEL	LENGTH
SM3410D-DE	3.488
SM3420D-DE	4.138
SM3430D-DE	4.788
SM3440D-DE	5.438
SM3450D-DE	6.088

ONE 15 PIN D-SUB FEMALE CONNECTOR		SOFTWARE SELECTABLE FUNCTIONS	
PIN#	NAME	FUNCTIONS	DIGITAL ANALOG I/O (TTL) INPUT (10 BIT)
1	I/O A	Ext Encoder A Input	0 to 5V
2	I/O B	Ext Encoder B Input	0 to 5V
3	I/O C	Positive (Right)	0 to 5V
4	I/O D	Negative (Left)	0 to 5V
5	I/O E	Analog Data	0 to 5V
6	I/O F	Analog Clock	0 to 5V
7	I/O G	G-Synchronization Pin	0 to 5V
8	ENCA OUT	Encoder A Output	
9	ENCB OUT	Encoder B Output	
10	RS232 TX	RS232-Transmit	
11	RS232 RX	RS232-Receive	
12	+5V OUT	+5V DC Output	
13	GND	Signal Ground	
14	PWR GND	Power Ground	
15	CONTROL PWR	Controller Power, +20V to 48V dc	

PART NO. SM3400D-DE

PART REVISIONS			
ECO	REV	DESCRIPTION	DATE
1	PRODUCTION	RELEASE	3/4/02
2	PRODUCTION	RELEASE	10/9/02

TEN	REV	PART NO.	DESCRIPTION	MATERIAL	QUANTITY

PARTS LIST		ANIMATICS	
TITLE	SCALE	SIZE	REV
SM3400D-DE SERIES	/	B	2

UNLESS OTHERWISE SPECIFIED DIMENSIONS IN INCHES ARE PER ANSI Y14.5M AND ARE IN DIMENSIONS ARE AS FOLLOWS:		APPROVALS	
DRAWN	CHECKED	DATE	
		3/4/02	