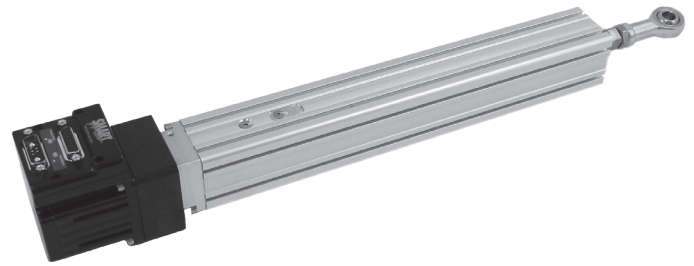
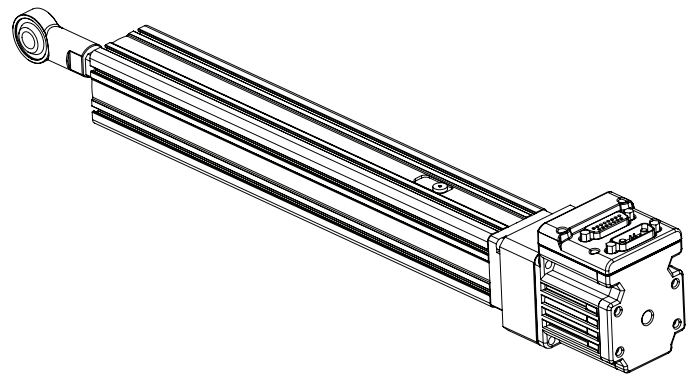


VL-CT45 Series Specifications

Parameter	Value	Units			
Configuration & Physical Parameters					
Motor	23 frame D-series SmartMotors ONLY	-			
Coupling	Beam	-			
Displacement/rev	6,12	mm/rev			
Position Sensors	consult factory	-			
Stroke Lengths	50, 100, 150 and 200	mm			
Overall Length	Stroke + 251.4 + motor	mm			
Overtravel	None	mm			
Unit Mass	$1.45 + 0.0052 \times (\text{stroke, mm}) + (\text{motor mass, kg})$	kg			
Performance					
Unidirectional Repeatability	20	μm			
Bidirectional Repeatability	40	μm			
Linear Accuracy	0.21/300	mm/mm			
Max Velocity	470 – 1000 (stroke dependent)	mm/s			
Max Acceleration	0.3	G			
Payload Mass	5.6	kg			
Rated Velocity	400	mm/s			
Lifetime*	15000	hr			
Load Rating, Dynamic					
Using SM23165DT motor	Direct Drive	2:1 pulley**	-		
Displacement/rev	6	12	6	12	mm/rev
Max Continuous Thrust	461	231	922	461	N
Max Peak Thrust	745	372	1490	745	N



VL-CT45

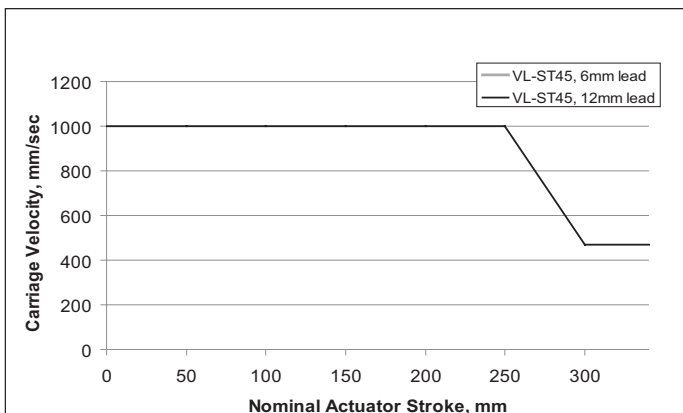


*Based on operating at an average speed of the rated velocity at the given payload. The Lifetime will be significantly reduced operating above the rated velocity and/or given payload.

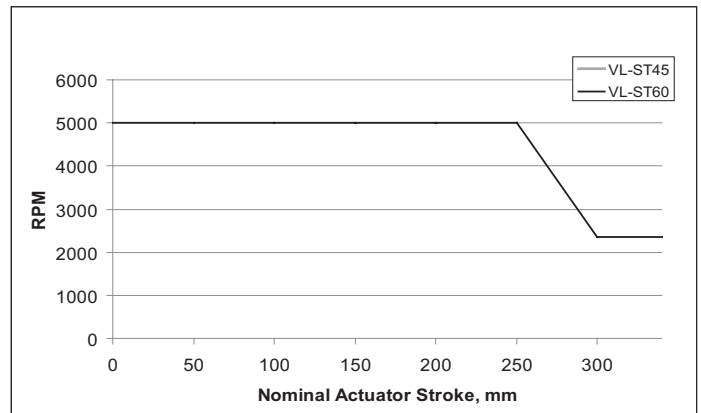
**Please see page 156 for pulley offset CAD drawings.

WARNING: Do not exceed these limits

VL-CT series - Maximum Permissible Carriage Velocity

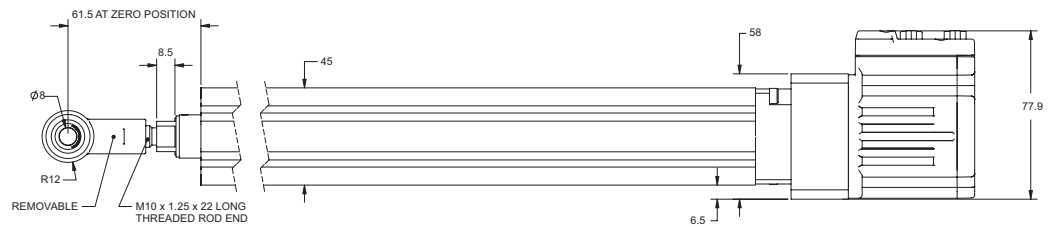
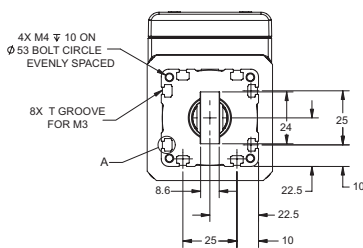
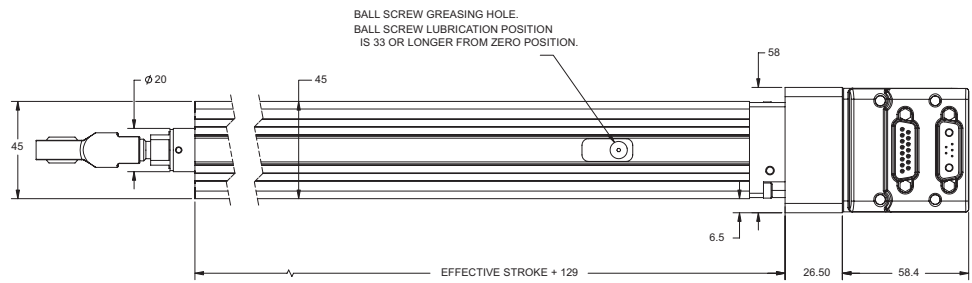
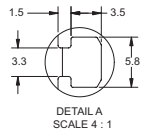


VL-CT series - Maximum Permissible Screw Speed



WARNING: Exceeding thrust, speed, or moment loading specifications could result in immediate damage to the actuators. Doing so will void the warranty.

OVERVIEW
SOFTWARE
D-STYLE MOTORS
D-STYLE CONNECTIVITY
PERIPHERALS
M-STYLE MOTORS
M-STYLE CONNECTIVITY
LINEAR SYSTEMS
POWER SUPPLIES & SHUNTS
GEAR HEADS
APPENDIX



Dimensions in millimeters

NOTE: For part numbers please refer to our website at www.animatics.com

For Thrust Curve performance data, see pages 158–173.