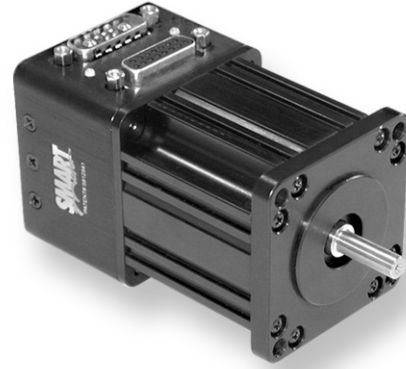


SM23205D		
Continuous Torque	2.96	in-lb
	47	oz-in
	0.33	N-m
Peak Torque	5.03	in-lb
	80	oz-in
	0.57	N-m
Nominal Continuous Power	226	Watt
No Load Speed	8,100	RPM
Max. Continuous Current* @ 6900 RPM	6.02	Amps
Peak Power @ 5995 RPM	335	Watts
Voltage Constant	6.137	V/kRPM
Inductance	0.40	mH
Encoder Resolution	4,000	Counts/Rev
Rotor Inertia	0.00224	oz-in-sec <sup>2</sup>
	1.582	10 <sup>-5</sup> Kg-m <sup>2</sup>
Weight	1.7	lb
	0.79	kg
Shaft Diameter	0.250	in
	6.35	mm
Shaft, Radial Load	7	lb
	3.18	kg
Shaft, Axial Thrust Load	3	lb
	1.36	kg
DeviceNet Available	Yes	
PROFIBUS Available		
CANopen Available	Yes	

\*Default voltage is 48V. See graphs for additional voltages.

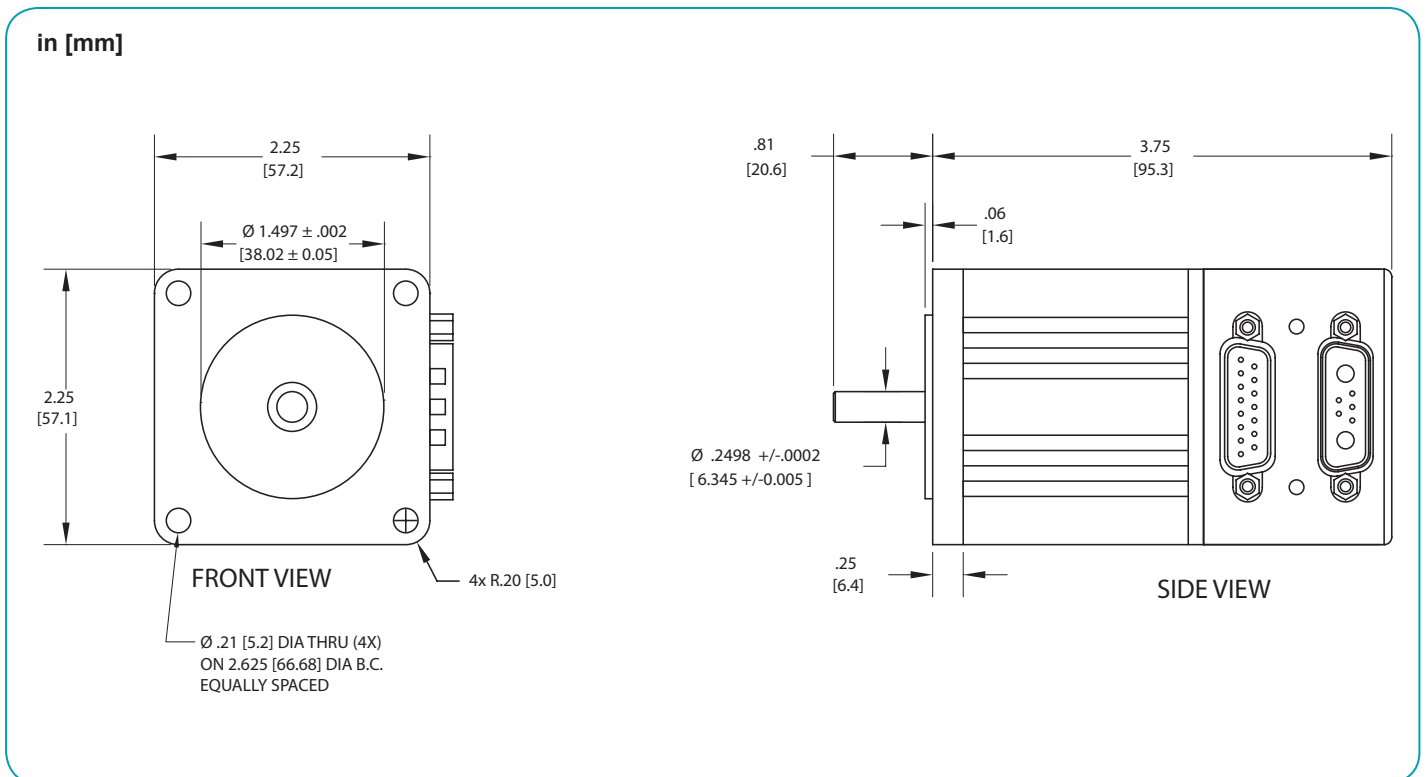


Operating temperature range: 0°C–85°C  
Storage temperature range: -10°C–85°C, noncondensing

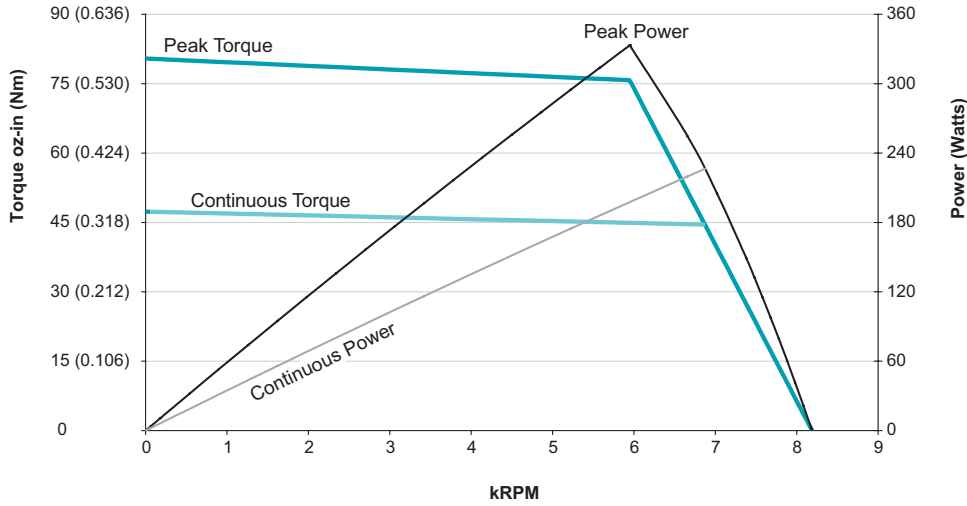
**NOTE: Motor specifications are subject to changes without notice. Consult website and factory for latest data.**



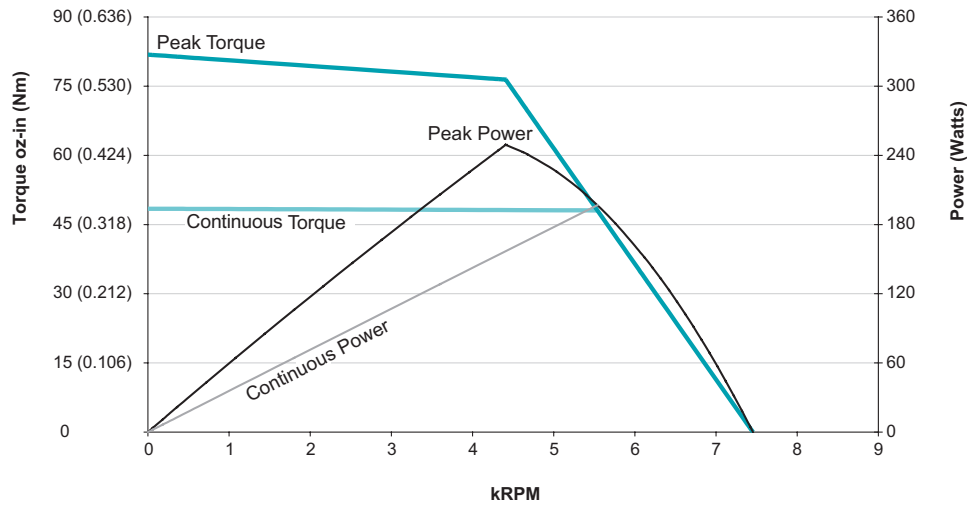
## Moog Animatics SmartMotor SM23205D (No Options) CAD Drawing



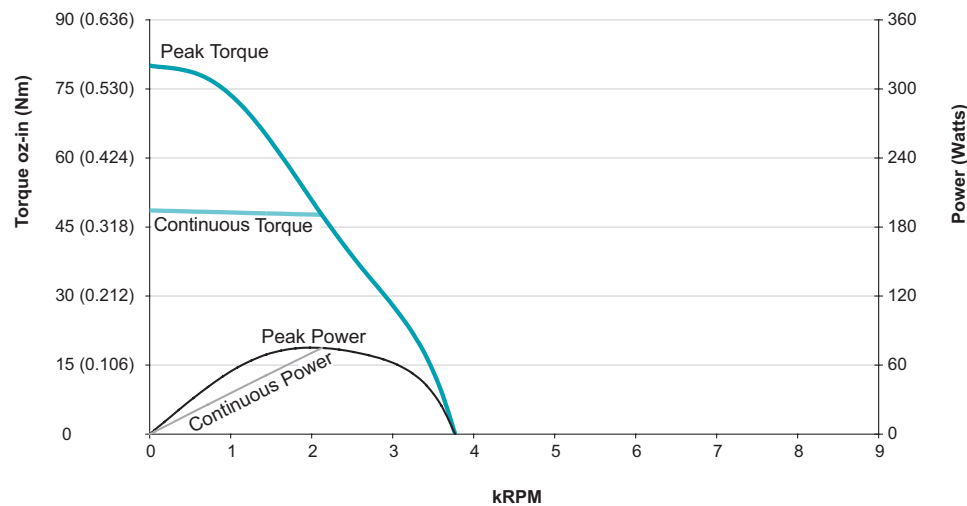
OVERVIEW  
SOFTWARE  
D-STYLE MOTORS  
D-STYLE CONNECTIVITY  
PERIPHERALS  
M-STYLE MOTORS  
M-STYLE CONNECTIVITY  
LINEAR SYSTEMS  
POWER SUPPLIES & SHUNTS  
GEAR HEADS  
APPENDIX



**SM23205D**  
**at 48 VDC**  
**at rise to 85°C**



**SM23205D**  
**at 42 VDC**  
**at rise to 85°C**



**SM23205D**  
**at 24 VDC**  
**at rise to 85°C**

All torque curves based on 25°C ambient.  
Motors were operated using MDT (Trapezoidal Drive Mode) Commutation.  
For ambient temperatures above 25°C, Continuous Torque must be linearly derated to 0% at 85°C.