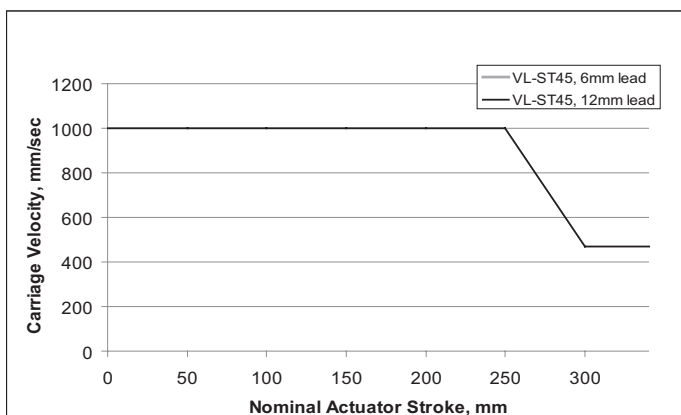


VL-CT35 with SM23165DT

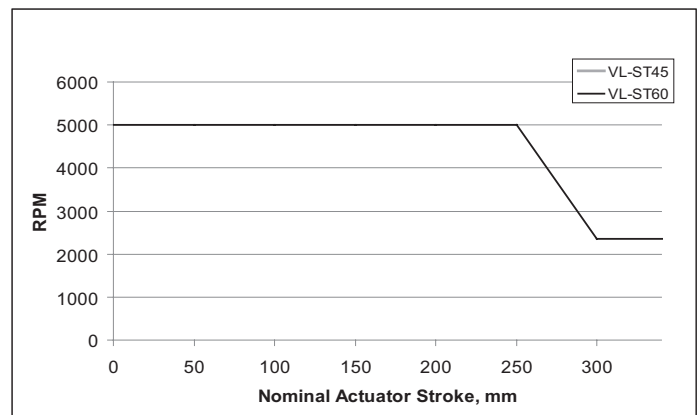
*Tie rods are available.

WARNING: Do not exceed these limits

VL-CT series - Maximum Permissible Carriage Velocity

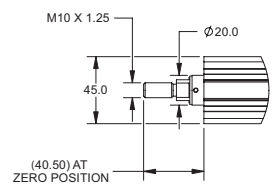
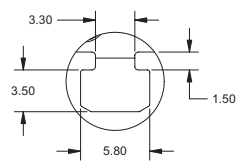
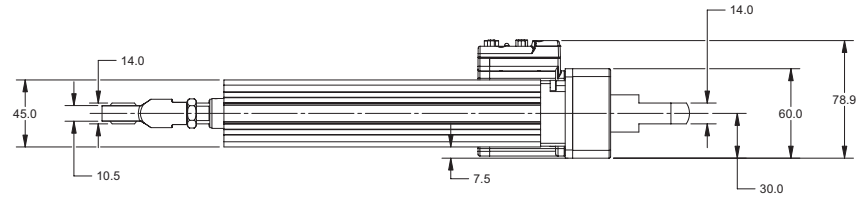
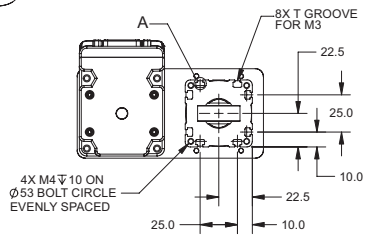
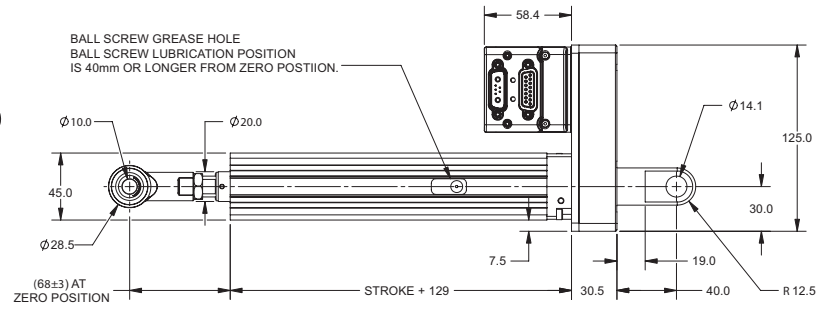
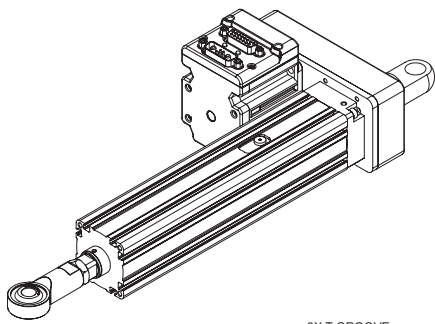


VL-CT series - Maximum Permissible Screw Speed



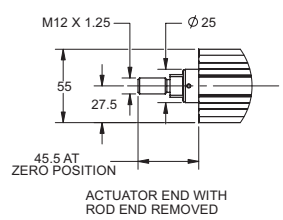
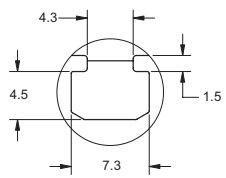
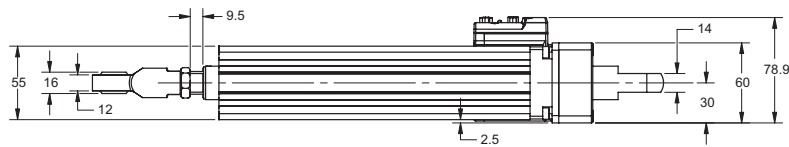
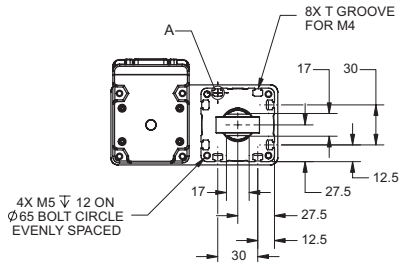
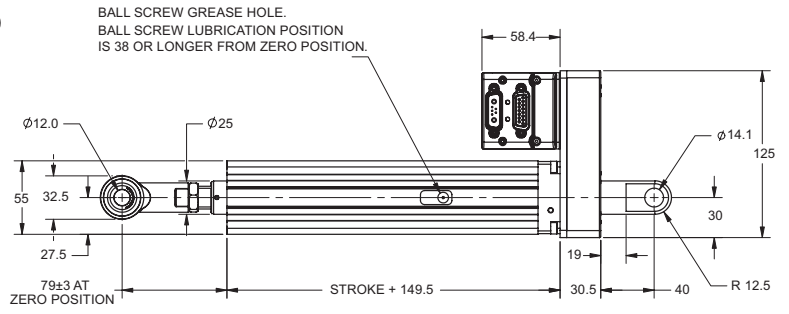
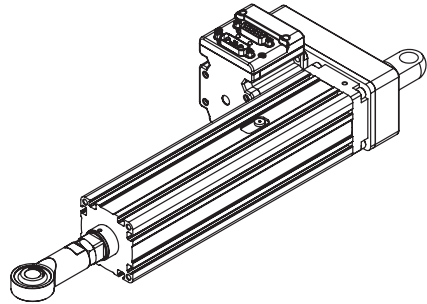
WARNING: Exceeding thrust, speed, or moment loading specifications could result in immediate damage to the actuators. Doing so will void the warranty.

OVERVIEW
SOFTWARE
D-STYLE MOTORS
D-STYLE CONNECTIVITY
PERIPHERALS
M-STYLE MOTORS
M-STYLE CONNECTIVITY
LINEAR SYSTEMS
POWER SUPPLIES & SHUNTS
GEAR HEADS
APPENDIX



VL-CT45 with SM23165DT

*Tie rods are available.



VL-CT55 with SM23165DT

*Tie rods are available.