

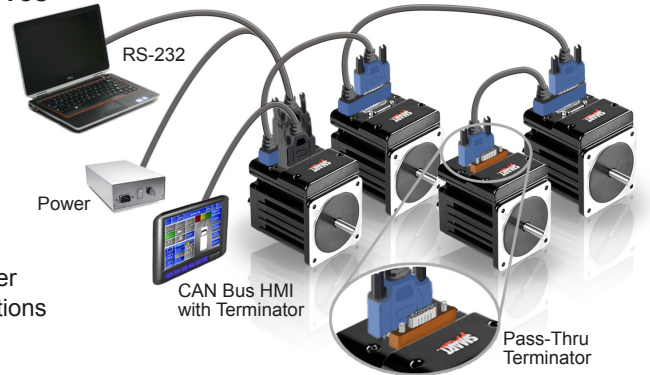


CBLSMCDS-xM (Moog Animatics CDS7 “Add-A-Motor™” Cable)

Power, RS-232 and CAN Bus Communications Daisy Chain Cable for Single-Cable Connections Between Multiple Moog Animatics SmartMotor™ Servos

CBLSMCDS series is the "Add-A-Motor" -style power and communications cable for a CDS7-equipped SmartMotor. It consists of a pass-thru 7W2 main motor connector split out to a single second motor 7W2 connector. This single cable is capable of carrying power, RS-232 and CAN Bus communications from motor to motor using only the 7W2 connector.

The CBLSMCDS cable is designed to allow ease of connection to multiple motors in a single daisy-chain network. The main power ground wire is a larger gauge to decrease noise emissions at the ground-plane level. All communications lines are internally shielded from the power lines.



Part Number	Length
CBLSMCDS-0.3	0.3 meters
CBLSMCDS-0.9	0.9 meters
CBLSMCDS-3.0	3 meters
CBLSMCDS-7.5	7.5 meters

NOTES: CBLSMCDS series cables with blue overmolded connectors are designed for the Class 5 D-Style SmartMotor with the CDS7 option only. DO NOT use these cables with standard Class 5 D-Style SmartMotors.

The two end nodes of the CAN Bus network must be terminated with a 120 ohm terminator (shunt) for proper biasing. If an end node is a SmartMotor, a pass-thru terminator is available (PN: CBLSM-TR120) that attaches directly to the motor's 15-pin D-sub connector to serve as the terminator.

Figure 1

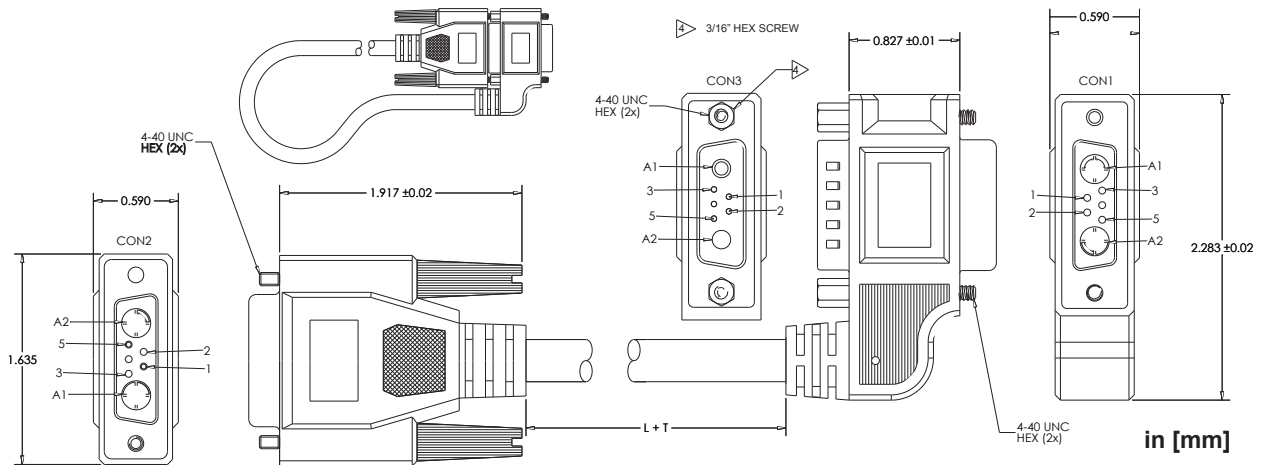
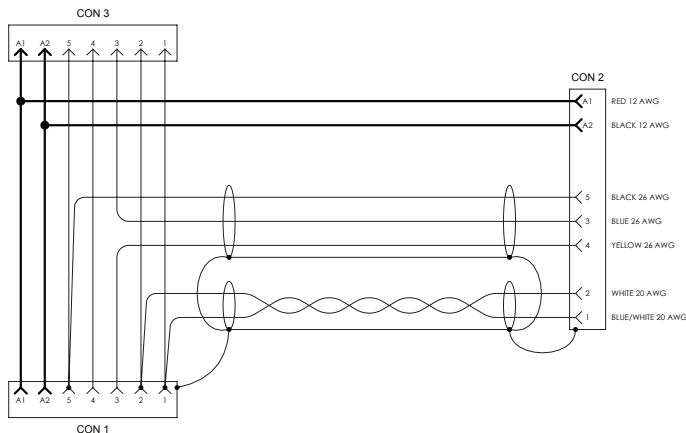


Figure 2



Connector Pinouts

CON 3 PIN	AWG - Color/Stripe	CON 1 PIN	AWG - Color/Stripe	CON 2 PIN	Description
1	20 - Any	1	20 - Blue/White	1	CAN Bus Low
2	20 - Any	2	20 - White	2	CAN Bus High
3		NC	26 - Blue	3	RS-232 TX
NC		3	26 - Yellow	4	RS-232 Crossover
4	26 - Any	4		NC	RS-232 RX
5	26 - Any	5	26 - Black	5	Signal Return
A1	12 - Any	A1	*12 - Red	A1	Power
A2	12 - Any	A2	*12 - Black	A2	Ground

*CON 2 PIN A1 and A2 wires spliced to wires between CON 1 and 3.
 Terminate 20/26 AWG shield drain wires to CON 1 and CON 2 as shown in Figure 2.

Specifications are subject to change without notice. Consult website and factory for latest data.

CAUTION: When using these cables with the larger 34 frame motors, please consult the factory for power limitations.

Power and Communication Cables – CDS7 Cable

Power and Communication Cable (Flying Leads) for Main 7W2 Connector on the SmartMotor™ with CDS7 Option

CBLPWRCOM3 series provides power along with RS-232 and CAN Bus communications in one convenient cable to simplify installation. It consists of a 7W2 main motor connector with RS-232 and CAN communications separately shielded from power, and a full shield over the entire length terminating at a metal jacket inside the over-molded connector.

Part Number	Length
CBLPWRCOM3-3M	3 meters
CBLPWRCOM3-5M	5 meters
CBLPWRCOM3-10M	10 meters

NOTE: The CBLPWRCOM3 cable is designed for use on the SmartMotor with the CDS7 option.

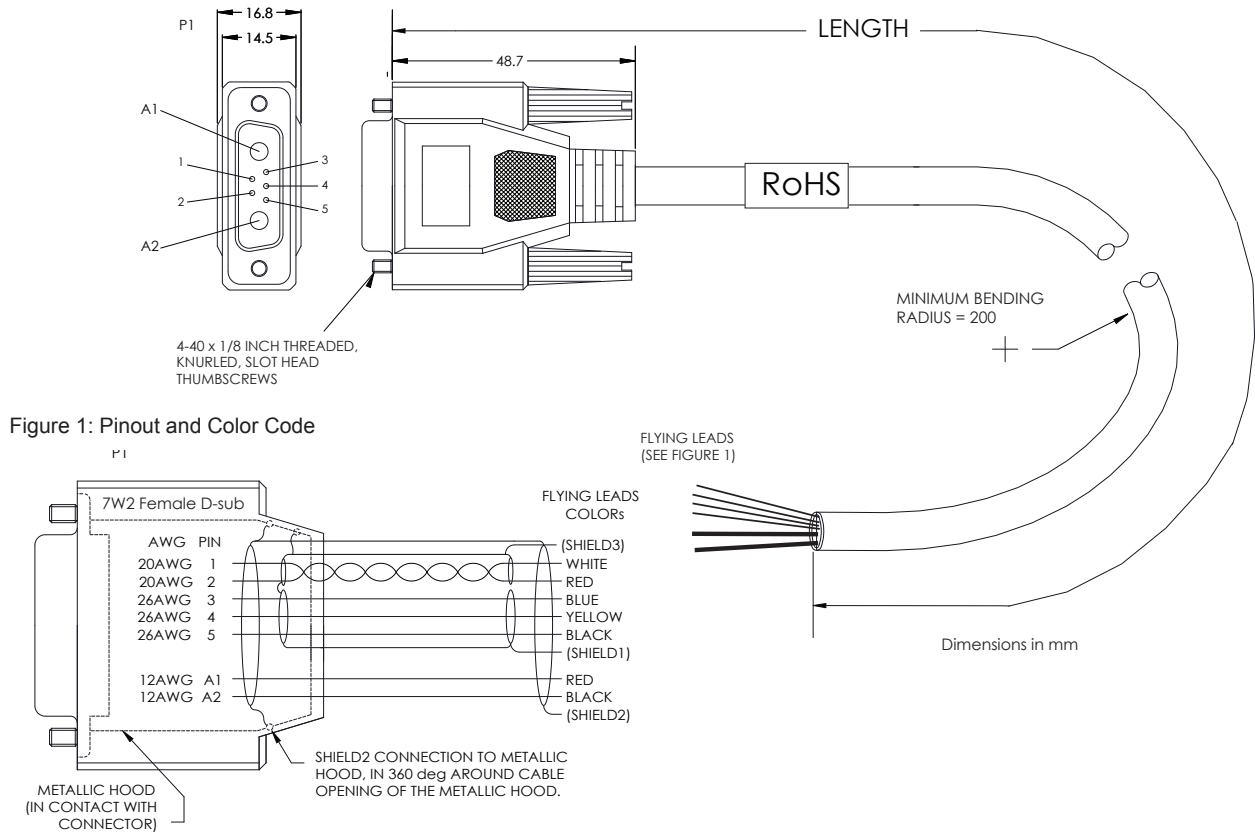


Figure 1: Pinout and Color Code

Convenient and Simple CAN Bus Pass-Thru Termination

The CBLSM-TR120 provides convenient, pass-thru termination for CAN Bus signals on the 15-pin D-Sub connector of the Class 5 SmartMotor. It is used on D-style Class 5 SmartMotors with either the -CDS or -CDS7 option.

The CBLSM-TR120 requires no special software or drivers — it simply attaches onto the 15-pin D-sub connector, allowing you to terminate the CAN Bus signal on the last SmartMotor node while still having access to the other D-sub connector pins.

NOTE:

- The last SmartMotor in the daisy chain must also be the last CAN Bus node. If there are other CANopen devices connected to the last SmartMotor, then a 120 ohm terminator (shunt) must be applied to the final CAN Bus device.
- For proper termination, there must be one terminator at each end of the CAN Bus.

CAUTION: Proper termination is critical for successful network communications. Using less than two terminators is not acceptable; using more than two terminators is not acceptable.

