

TABLE 1: PART NUMBER CHART

P/N	L [M]	L [FT]
CBLI05V-3M	3.0	9.8
CBLI05V-5M	5.0	16.4
CBLI05V-10M	10.0	32.8

- NOTES:, UNLESS OTHERWISE SPECIFIED:
1. CBLI05V-xM IS USE WITH THE 15PIN DSUB CONNECTOR WITH THE SMARTMOTOR.
  2. CABLE: 16 CONDUCTORS, TWISTED AND SHIELDED PAIR. (see FIGURE 1). HIGH FLEX PVC JACKET (BLACK).
  3. VOLTAGE AND CURRENT RATING:  
26AWG: 5Vdc at 200mA  
18AWG: 48Vdc at 1A.
  4. SHIELDS ARE NOT IN CONTACT WITH CONNECTOR, CONNECTOR SHELL, AND WITH ONE ANOTHER.
  5. MINIMUM BENDING RADIUS IS 3.15in.
  6. CBLI05V-xM IS RoHS COMPLIANT.
  7. OPERATING TEMPERATURE RANGE: 0C to 50C.
  8. STORAGE TEMPERATER RANGE: -20C to 60C (NOT EXCEED HALF A YEAR).

FIGURE 1: PINOUT AND COLOR CODE

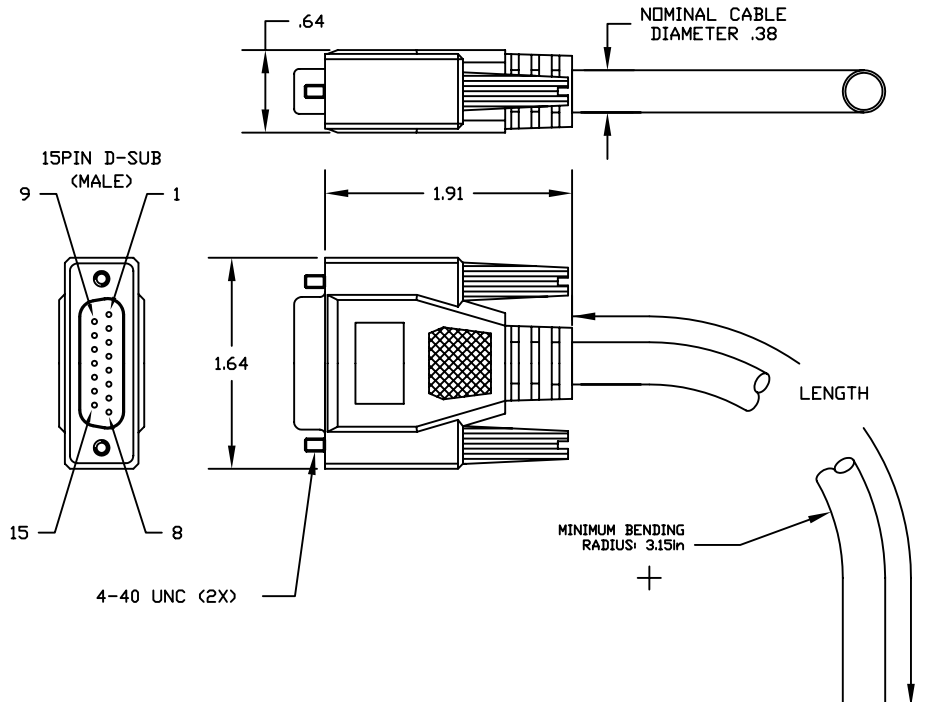
15PIN DSUB (MALE)

AWG	PIN	PIN	FUNCTION	COLOR
26AWG	1	1	I/O A	BLUE
26AWG	2	2	I/O B	BROWN
26AWG	3	3	I/O C	GRAY
26AWG	4	4	I/O D	GREEN
26AWG	5	5	I/O E	DRANGE
26AWG	6	6	I/O F	WHITE
26AWG	7	7	I/O G	YELLOW
26AWG	13	13	SIG GND	BLACK/WHITE
26AWG	8	8	ENC A	BLUE/WHITE
26AWG	9	9	ENC B	BROWN/WHITE
26AWG	10	10	RS232 Tx	BLUE/BLACK
26AWG	11	11	RS232 Rx	YELLOW/BLACK
26AWG	12	12	5Vdc	RED/WHITE
26AWG	13	13	SIG GND	BLACK/WHITE
18AWG	14	14	PWR GND	BLACK
18AWG	15	15	PWR	RED

CONFIDENTIAL: THE INFORMATION CONTAINED HEREIN IS THE PROPRIETARY PROPERTY OF ANIMATICS CORPORATION, AND IS PROTECTED AS A TRADE SECRET. IT IS SUBMITTED FOR USE BY RECIPIENT ONLY FOR A BUSINESS PURPOSE AUTHORIZED BY ANIMATICS CORPORATION. ANY OTHER USE IS PROHIBITED. RECIPIENT AGREES TO KEEP SUCH INFORMATION CONFIDENTIAL.

PART NO.  
CBLI05V-x

PART REVISIONS				
ECO	REV	DESCRIPTION	DATE	APPROVED
	1	CREATE DWG	06/08/06	MT



ITEM NO.	QTY	PART NO.	DESCRIPTION	MATERIAL SPECIFICATION
PARTS LIST				
UNLESS OTHERWISE SPECIFIED, DIMENSIONS & TOLERANCES ARE PER ANSI Y14.5M AND ARE IN INCHES. TOLERANCES ARE AS FOLLOWS: DECIMALS .XXX ± .01 ANGLES ± .01 XXX ± .005 XXXXX ± N/A				
MATERIAL		THIRD ANGLE PROJECTION		<b>Animatics Corporation</b>  TITLE CBLI05V-xM x FOR 3, 5, AND 10
FINISH		APPROVALS		
MATTE BLACK FINISH		DATE		SIZE <b>B</b> COMPUTER GENERATED DRAWING PART NO. CBLI05V-xM REV <b>1</b>
		SCALE 1/1		
		SHEET 1 OF 1		