

- NOTES: 1 INTERNAL 1000 LINE ENCODER, 4000 ENCODER COUNTS PER REVOLUTION. INDEX LINE ON ENCODER WHEEL.
- 2 TIED INTERNALLY: TX : CNE PIN 10 TO CNI PIN 3
RX : CNE PIN 11 TO CNI PIN 4
+5V : CNE PIN 12 TO CNI PIN 2
GND : CNE PIN 13, CNE PIN 14 AND CNI PIN 5 TIED TO CNI PIN A2
- 3 SHAFT HAS WOODRUFF KEYSEAT BASED ON ANSI 404 (1/8" X 1/2" NOMINAL) SPEC PER ANSI B17.2-1967 (R1998)
- 4 KEY IS WOODRUFF KEY BASED ON ANSI 404 (1/8" X 1/2" NOMINAL) SPEC PER ANSI B17.2-1967 (R1998). KEY KEYS NOT COME INSTALLED ONTO SHAFT.
- 4 ALL DIMENSIONS ARE NOMINAL UNLESS OTHERWISE SPECIFIED
- 5 PINOUT IS FOR SMARTMOTORS NOT EQUIPPED WITH DRIVE ENABLE. MOTORS EQUIPPED WITH DRIVE ENABLE "DE" OPTION HAVE ALTERNATE PINOUT. REFER TO DRAWING FOR "DE" SMARTMOTOR.

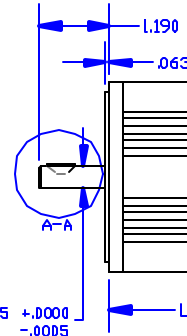
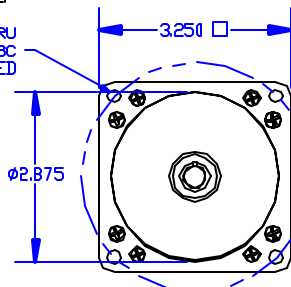
PART NO.
SM34X0D-KW

DRAWING REVISIONS		
DWG REV	DESCRIPTION	DATE
1	PRODUCTION RELEASE	12/17/03
2	CHANGED TO ANSI404	02/05/04

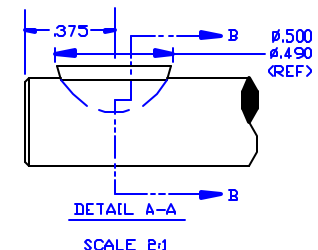
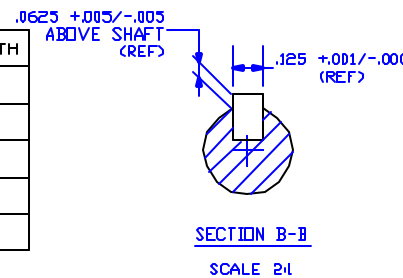
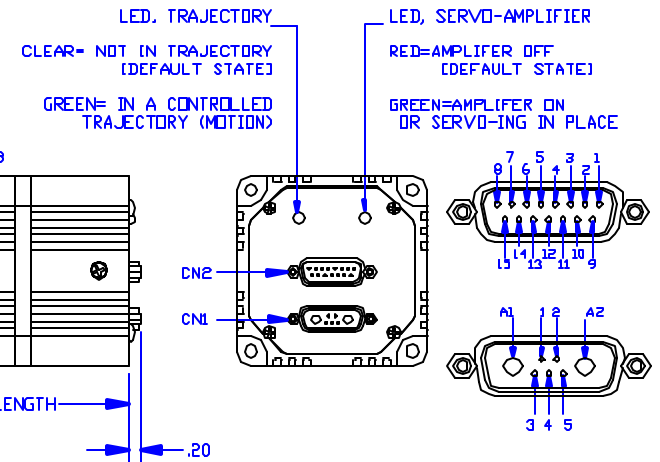
CNI:CONNECTOR 1, 7 PIN COMBO D-SUB MALE CONNECTOR		
PIN#	NAME	FUNCTIONS
1	I/O G	G-Synchronization Pin
2	+5V OUT	+5V Out
3	RS232 TX	RS232-Transmit
4	RS232 RX	RS232-Receive
5	GND	Signal Ground
A1	PVR	Power,+20 to 48V dc
A2	PVR GND	Power Ground

CNI: CONNECTOR 2, 15 PIN I/O D-SUB FEMALE CONNECTOR				
PIN#	NAME	SOFTWARE SELECTABLE FUNCTIONS		
		FUNCTIONS	FUNCTIONS	DIGITAL I/O (TTL) ANALOG INPUT (10 bit)
1	I/O A	Ext Encoder A Input	Step Input	5V 0 to 5V
2	I/O B	Ext Encoder B Input	Direction Input	5V 0 to 5V
3	I/O C	Positive (Right) Limit Input		5V 0 to 5V
4	I/O D	Negative (Left) Limit Input		5V 0 to 5V
5	I/O E	Anilink Data	RS-485 Signal A	5V 0 to 5V
6	I/O F	Anilink Clock	RS-485 Signal B	5V 0 to 5V
7	I/O G	G-Synchronization Pin	RS-485 Adapter Flow Control Line	5V 0 to 5V
8	ENCA OUT	Encoder A Output		
9	ENCB OUT	Encoder B Output		
10	RS232 TX	RS232-Transmit		
11	RS232 RX	RS232-Receive		
12	+5V OUT	+5V DC Output		
13	GND	Signal Ground		
14	PVR GND	Power Ground		
15	PVR	Power, +20V to 48V dc		

NOTE: CURRENT CANNOT EXCEED 1AMPS ON PIN 14 AND PIN 15.



MODEL	LENGTH
SM3410D-KW	3.488
SM3420D-KW	4.138
SM3430D-KW	4.788
SM3440D-KW	5.438
SM3450D-KW	6.088



ITEM NO.	QTY	PART NO.	DESCRIPTION	MATERIAL SPECIFICATION
PARTS LIST				
UNLESS OTHERWISE SPECIFIED DIMENSIONS & TOLERANCES ARE PER ANSI Y14.5M AND ARE IN INCHES. TOLERANCES ARE AS FOLLOWS: DIMENSIONS 3001 ANGLES & 3002				
MATERIAL		DRAWN		
ALUMINUM		TC		
FINISH		DATE		
BLACK ANODIZE		12/16/03		
SCALE		TITLE		
NOT TO SCALE		SM34X0D-KW SERIES WOODRUFF KEY ANSI404		
SIZE	COMPUTER GENERATED DRAWING	PART NO.	DWG REV	
B		SM34X0D-KW	2	
SIMILAR TO:	CAD FILE NAME	SHEET		
	34MOTOR	1 OF 1		

CONFIDENTIAL. THE INFORMATION CONTAINED HEREIN IS THE PROPRIETARY PROPERTY OF ANIMATICS CORPORATION, AND IS PROTECTED AS A TRADE SECRET. IT IS SUBMITTED FOR USE BY RECIPIENT ONLY FOR A BUSINESS PURPOSE AUTHORIZED BY ANIMATICS CORPORATION. ANY OTHER USE IS PROHIBITED. RECIPIENT AGREES TO KEEP SUCH INFORMATION CONFIDENTIAL.