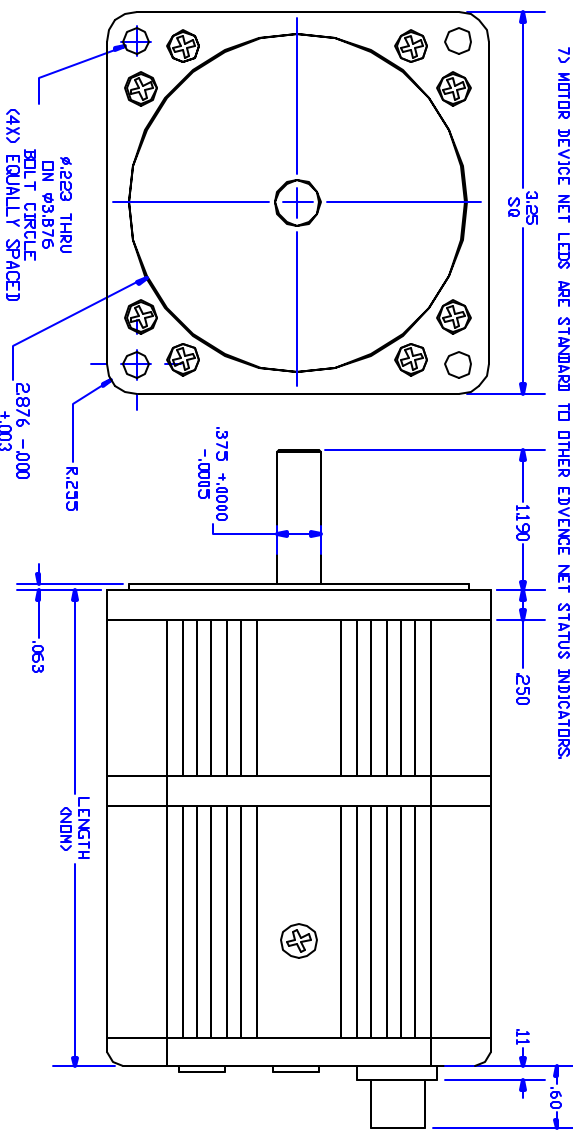


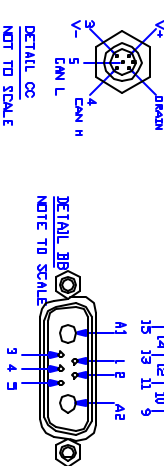
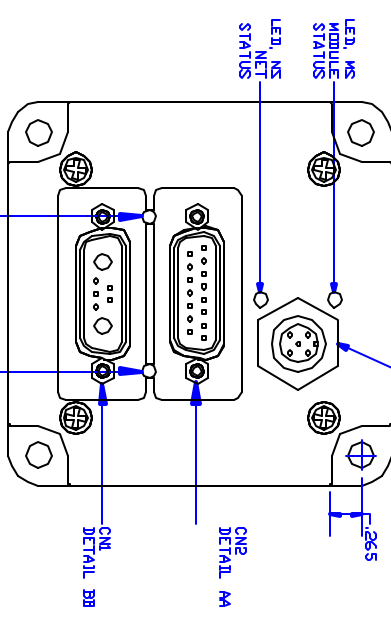
NOTES: 1) INTERNAL 1000 LINE ENCODER, 4000 ENCODER COUNTS PER REVOLUTION.
 2) INDEX LINE ON ENCODER WHEEL.
 3) TX ONE PIN 10 TO CNI. PIN 3
 4) RX ONE PIN 11 TO CNI. PIN 4
 5) +5V ONE PIN 12 TO CNI. PIN 2
 6) GND ONE PIN 13 TO CNI. PIN 5
 7) FOR HIGH SPEED OR HIGH TORQUE OPERATION USE POWER PIN A1 AND A2 ON CNI.
 8) LED, SERVO-AMPLIFIER INDICATOR. RED = SERVO-AMPLIFIER OFF (DEFAULT) STATUS
 9) GREEN = SERVO-AMPLIFIER ON OR SERVO-ING IN PLACE
 10) GREEN = NOT IN CONTROLLED TRAJECTORY (DEFAULT) STATUS
 11) LED, TRAJECTORY INDICATOR. GREEN = IN CONTROLLED TRAJECTORY (CONTROLLED MOTION)
 12) ALL DIMENSIONS ARE NOMINAL, OTHERWISE SPECIFIED.
 13) RECOMMEND BOLTING SCREW 10-24 OR 10-32
 14) MOTOR DEVICE NET LEADS ARE STANDARD TO OTHER EVIDENCE NET STATUS INDICATORS.



CONN. NAME	FUNCTIONS	DIGITAL	ANALOG
Port A	External Encoder A Output (Top Input)	1/0 TTL (DIRT ON RMT)	5V
Port B	External Encoder B Output (Top Input)	5V	0 to 5V
Port C	Robot Limit Input	5V	0 to 5V
Port D	Robot Limit Output	5V	0 to 5V
Port E	10 INT USE	5V	0 to 5V
Port F	10 INT USE	5V	0 to 5V
Port G	10 INT USE	5V	0 to 5V
Encoder A Output	Encoder A Output		
Encoder B Output	Encoder B Output		
Encoder TX	Encoder TX		
Encoder RX	Encoder RX		
5V DIRT	5V DIRT		
Signal Ground	Signal Ground		
Power Ground	Power Ground		
Power +5V to 48V	Power +5V to 48V		

CONN. NAME	FUNCTIONS	DIGITAL	ANALOG
Port 1	G-Synchronization Pin	1/0 TTL (DIRT ON RMT)	5V
Port 2	5V DIRT	5V	0 to 5V
Port 3	Reserve TX	5V	0 to 5V
Port 4	Reserve RX	5V	0 to 5V
Port 5	Signal Ground	5V	0 to 5V
Port 6	Power Ground	5V	0 to 5V
Port 7	Power +5V to 48V	5V	0 to 5V

MODEL	LENGTH
SM3410D-DN	4.04
SM3420D-DN	4.69
SM3430D-DN	5.34
SM3440D-DN	5.99
SM3450D-DN	6.64



PART NO.
SM3400D-DN

PART REVISIONS				
ECO	REV	DESCRIPTION	DATE	APPROVED
3085	1	PRODUCTION RELEASE	05/01/02	TC
	2	MODIFY DRAWING FOR WEB	11/26/02	MT

ITEM	QTY	PART NO.	DESCRIPTION	MATERIAL	STOCK POSITION

PARTS LIST	
UNLESS OTHERWISE SPECIFIED DIMENSIONS 1 TO DIMENSIONS ARE PER ANSI Y14.5M AND ARE IN INCHES. DIMENSIONS ARE AS FOLLOWS:	
DRAWN	DATE
APPROVALS	
MATERIAL	SCALE
FINISH	

Armatex Corporation

SM3400D-DN SERIES
DEVICE NET, DB15 I/O

SIZE: B
GENERATED: DRAWING: SM3400D-DN
SHEET 1 OF 1